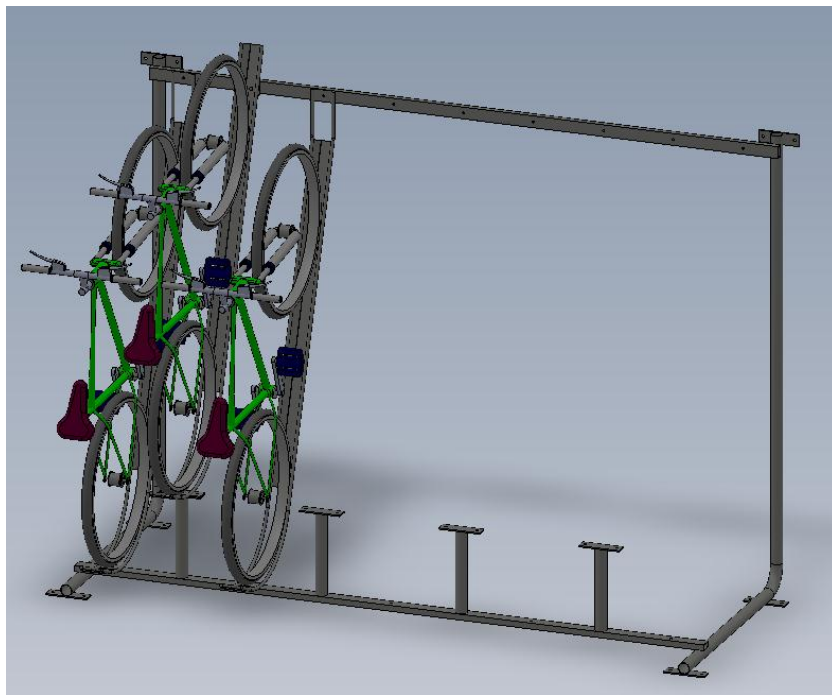
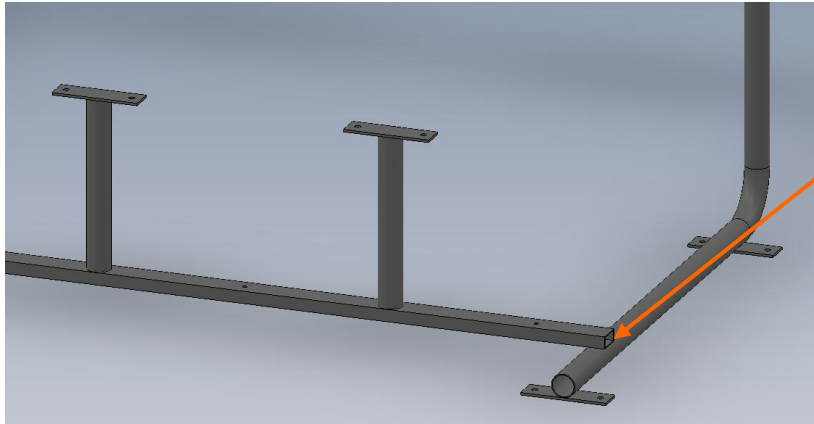




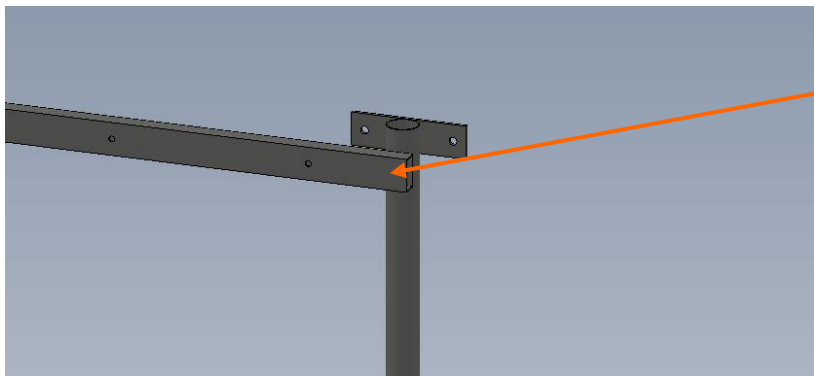
**Semi Vertical Fitting Instructions**  
For technical support call 08450942217





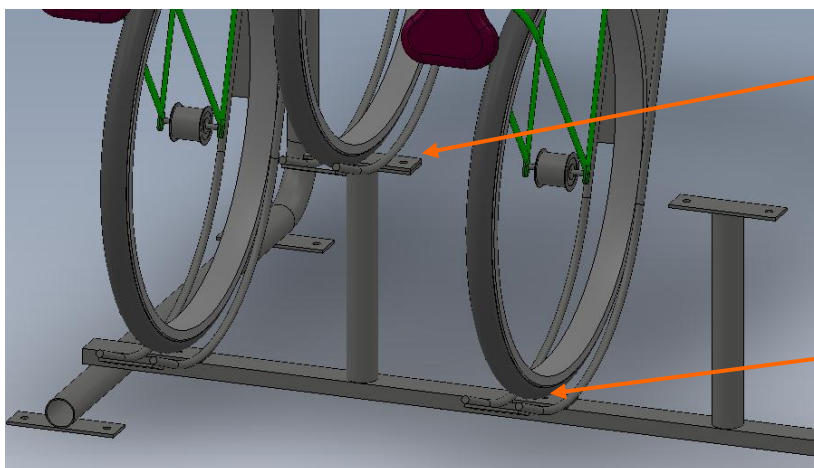
**Lower Rail**

Fix to legs using 2 x M10 x 100 bolts



**Upper Rail**

Fix to legs using 2 x M10 x 100 bolts

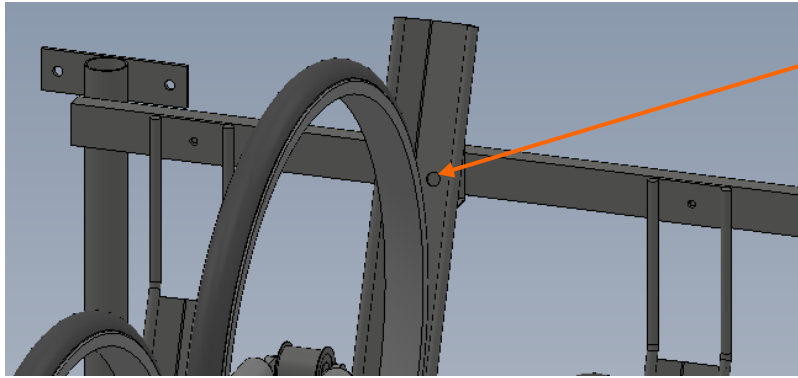


**Higher support rail**

Fit short cycle trough to upper support using 2 x M10 x 40 bolts

**Lower support rail**

Fit long cycle trough to lower rail using 1 x M10 x 40 bolt



**Upper rail trough support**

Fit cycle trough to upper rail using 1 x M10 x 60 bolt

- You will require the following tools to fit this product:
  - Drill
  - M10 or M12 masonry bit dependant on surface bolt size
  - Hammer
  - Socket and spanner set
  - Sand paper for de-buring any possible sharp edges you may come across (typically this is completed prior despatch)
- When you have fully assembled the product place this in position for mounting to the surface.
- You can drill through the steel bolt holes whilst in position.
- Once completed drive in your concrete anchor fixings using a heavy duty hammer.
- Ensure that you have tightened the bolts as best you can. Happy parking!!!!

**For technical support call 0845 0942217**